

What Geography looks like at St Mary Mags

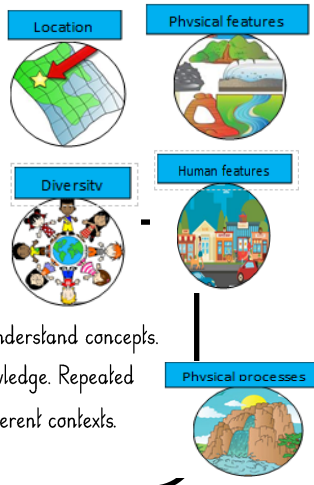
Curriculum drivers.
These shape, personalise and underpin our curriculum.



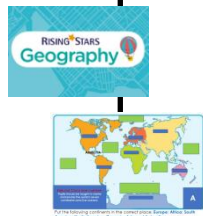
Threshold concepts
The big ideas which children will explore and return to throughout topics and throughout the whole of their time at school.



Milestones and National Curriculum Aims
The goals children are aiming for to show they are meeting expectations of the curriculum.



Resources to support teaching and learning
Knowledge organisers
Chris Quigley
Rising Stars
Focus Education
Plan Bee
Collins Connected Geography
Grammarsaurus
Odizzi

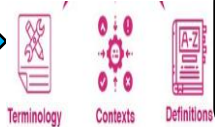


Knowledge categories
Providing children with the knowledge they need to understand concepts. Making connections between learned and new knowledge. Repeated opportunities to practise, revisit and apply to different contexts.

POP Tasks
(Proof of Progress Tasks)
Securing progress and providing children with opportunities to apply what they have learnt.



Vocabulary
To articulate understanding of subject



Retrieval practice and opportunities.
Strategies to embed and deepen knowledge. A variety of activity types.



Recognising individual learning styles
Providing opportunities for children to take ownership, present their own lines of enquiry.

Experiences
Providing children with the cultural capital they need to succeed in life.

Sequenced lessons
Geography interleaved into planning each week – 1 hour geography lesson each week (every two weeks KSI). Opportunities to acquire knowledge before applying through investigation and meaningful learning.

Progression and depth documents
Differentiation and depth of understanding.

Milestone indicators	Emerging	Developing	Secure	Exceeding
Name and locate the countries of Europe and identify their main physical and human characteristics.	<ul style="list-style-type: none"> Label the countries of Europe and identify main physical and human features using a vocabulary list to help you. 	<ul style="list-style-type: none"> Locate and describe capital cities and main regions of Europe and the British Isles; locate where they live in the UK using locational terminology (north, south, east, west) and the names of nearby counties. Describe the main physical and human characteristics of some countries. Identify the longest rivers in the world, largest deserts, highest mountains. 	<ul style="list-style-type: none"> Compare and contrast a Western and Eastern European country. Compare and contrast the locations and features of Europe to those of another continent. 	<ul style="list-style-type: none"> Investigate and compare the diversity, human and physical features of countries within Europe. Invent a tour guide for a European country. Include your reasons for mentioning features in the guide.

